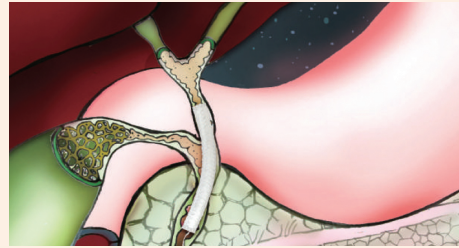


01 EGIS Biliary Fully Covered Stent



- ▣ e-PTFE fully covered stent with a lasso for both benign and malignant diseases
- ▣ Excellent flexibility and conformability with low axial force
- ▣ Sufficient radial force to push the strictures out



02 Specification

Delivery System : 8Fr, 50/180cm

Ordering NO. First two** : Diameter(mm) / Last two** : Length(cm)

Ordering No.			Size	
Type	OTW	TTS	Diameter	Length
Biliary Fully Covered Stent	BEPB****0805	BEPB****0818	8, 10	4, 5, 6, 7, 8, 9, 10, 12

Stent Type	OTW(Over The Wire)				
	Ordering NO.	Stent		Delivery System	
		Diameter(mm)	Length(cm)	Profile(fr.)	Length(mm)
Biliary Fully Covered (e-PTFE)	BEPB08040805	8	4	8	500
	BEPB08050805		5		
	BEPB08060805		6		
	BEPB08070805		7		
	BEPB08080805		8		
	BEPB08090805		9		
	BEPB08100805		10		
	BEPB08120805		12		
	BEPB10040805	10	4	8	500
	BEPB10050805		5		
	BEPB10060805		6		
	BEPB10070805		7		
	BEPB10080805		8		
	BEPB10090805		9		
	BEPB10100805		10		
	BEPB10120805		12		

Stent Type	TTS(Through The Scope)				
	Ordering No.	Stent		Delivery System	
		Diameter(mm)	Length(cm)	Profile(fr.)	Length(mm)
Biliary Fully Covered (e-PTFE)	BEPB08040818	8	4	8	1800
	BEPB08050818		5		
	BEPB08060818		6		
	BEPB08070818		7		
	BEPB08080818		8		
	BEPB08090818		9		
	BEPB08100818		10		
	BEPB08120818		12		
	BEPB10040818	10	4	8	1800
	BEPB10050818		5		
	BEPB10060818		6		
	BEPB10070818		7		
	BEPB10080818		8		
	BEPB10090818		9		
	BEPB10100818		10		
	BEPB10120818		12		

